

13th Annual Line Dancers' Spring Break

PROTECT YOUR INVESTMENT

Life throws us all a curve now and then. We can offer you trip cancellation insurance for only \$39.00. Call us at 413 662-2323 for more information.



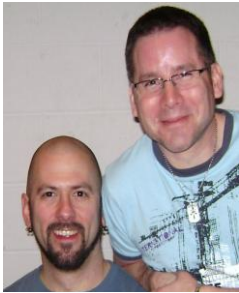
Welcome Pool Party with 1 hour open bar, "Beach Luau" Dinner with a roasted pig! 2 more scrumptious buffet dinners and 4 breakfasts with omelet station on Sunday; all workshops and evening dances included!

www.LineDancersSpringBreak.com

Crown Reef Resort – Myrtle Beach, SC

April 25 – April 29, 2012

Special Guest Instructors for our 13th year are.....



John Robinson & Junior Willis



Frank Trace



Johnny "2-Step" Houston



Steve Lescarbeau



Amy Christian-Sohn



DJ - Louie St. George

Can't stay for the whole 4 nights/5 days....no problem. Stay 2 or 3 night packages.

4 nights are Wed, Thurs, Fri, Sat./ 3 nights are Thurs, Fri, Sat./ 2 nights are Fri and Sat./

4nt package Single \$839.00* Double \$599.00* Triple \$569.00* Quad \$529.00*

*All rates are per person in US Dollars and include 4 nights hotel accommodations in an Oceanfront Deluxe Suite with either 2 Queen Beds, 1 Sofa Sleeper, 1 Hideaway, Full Kitchen, 2 TV's, with a private balcony; or 1 king bed efficiency or 2 queens efficiency; hotel taxes and service charges, one hour open bar welcome pool party, buffet breakfast daily, welcome cocktail reception with cash bar, 3 dinners, all meal taxes and gratuities, all workshops, and all evening dances. Single rates are for one person in a room, Double rates are per person for two people sharing a room, Triple rates are per person for three persons sharing a room, and Quad rates are per person for four persons sharing a room. Any additional persons in a room pay same rate as quad rate.

3nt package Single \$659.00* Double \$479.00* Triple \$449.00* Quad \$429.00*

*All rates are per person in US Dollars and include 3 nights hotel accommodations in an Oceanfront Deluxe Suite with either 2 Queen Beds, 1 Sofa Sleeper, 1 Hideaway, Full Kitchen, 2 TV's, with a private balcony; or 1 king bed efficiency or 2 queens efficiency; hotel taxes and service charges, 3 buffet breakfasts daily, 2 dinners – Thursday evening and Saturday evening, all meal taxes and gratuities, Friday and Saturday workshops, and Thursday and Saturday evening dances. Single rates are for one person in a room, Double rates are per person for two people sharing a room, Triple rates are per person for three persons sharing a room, and Quad rates are per person for four persons sharing a room. Any additional persons in a room pay same rate as quad rate.

2nt package Single \$419.00* Double \$279.00* Triple \$259.00* Quad \$239.00*

*All rates are per person in US Dollars and include 2 nights hotel accommodations in an Oceanfront Deluxe Suite with either 2 Queen Beds, 1 Sofa Sleeper, 1 Hideaway, Full Kitchen, 2 TV's, with a private balcony; or 1 king bed efficiency or 2 queens efficiency; hotel taxes and service charges, 2 buffet breakfasts daily, 1 dinner Saturday evening, all meal taxes and gratuities, Saturday workshop only, and the Saturday evening dance. Single rates are for one person in a room, Double rates are per person for two people sharing a room, Triple rates are per person for three persons sharing a room, and Quad rates are per person for four persons sharing a room. Any additional persons in a room pay same rate as quad rate

Additional night rates are available

Single \$125.00* Double \$65.00* Triple \$45.00* Quad \$40.00*

*All rates are per person in US Dollars and include hotel accommodations in an Oceanfront Deluxe Suite with either 2 Queen Beds, 1 Sofa Sleeper, 1 Hideaway, Full Kitchen, 2 TV's, with a private balcony; or 1 king bed efficiency or 2 queens efficiency; hotel taxes and service charges. Single rates are for one person in a room, Double rates are per person for two people sharing a room, Triple rates are per person for three persons sharing a room, and Quad rates are per person for four persons sharing a room. Any additional persons in a room pay same rate as quad rate.

A deposit of \$75.00 per person is required with application, final payment is due by March 31, 2012.

Need a payment plan? Deposit your \$75.00 by September 30th, and \$75.00 by 10/31; \$75.00 by 11/30; \$75.00, by 12/31; \$75.00 by 01/31; \$75.00 by 2/28; and the balance by March 31, 2012.

Visit our new website at www.LineDancersSpringBreak.com for more information.

Cancellation penalties:	Cancellations received by 1/15/12	\$ 50.00 per person	Payment Plan Available:	\$75.00 BY 10/31/12
	2/15/12	\$ 100.00 per person	\$75.00 BY 11/30/12	\$75.00 BY 12/31/12
	3/15/12	\$ 200.00 per person	\$75.00 BY 01/31/12	\$75.00 BY 2/28/12
	4/15/12	\$ 300.00 per person	BALANCE DUE BY 03/31/12	
	After 4/15/12	NO REFUNDS		

Protect your investment, add trip insurance for only \$39.00*Must purchase within 14 days of your first deposit.

Line Dancers Spring Break 4/25/2012 – 4/29/2012

Complete this application only if you are staying at the Crown Reef Resort with the inclusive package,

If you are NOT staying at the Crown Reef, please complete Dance Only Form.

This form can be found on our website, or one can be sent to you by contacting steve@aplusvacations.com

If you are traveling with a spouse you may complete only one application and return with your deposit of \$75.00 per person by check only. If traveling alone and sharing a room with friends, please complete ONE application per person and send in with your deposit of \$75.00 per person by check. (Please note, there is a \$25.00 fee on returned checks)

All deposits and new registrations must be received by March 15th, 2012, Final payment due by March 31, 2012.

NAME: SPOUSE:

Please indicate whom you will be rooming with if **NOT** your spouse: _____

ADDRESS:CITY: STATE:

ZIP: PHONE: (.....)..... E-MAIL ADDRESS:

Please indicate with an "X" after the number of night's package you are registering for:

4 night package (4/25 – 4/29) _____ 3 night package (4/26 – 4/29) _____ 2 night package (4/27 -4/29) _____

Please indicate the number of nights you would like to stay either before or after the event dates of 4/25 – 4/29.

Number of additional nights before 4/25 _____ Number of additional nights beginning 4/29 _____

Verify dates of your vacation: CHECKING IN – APRIL _____ CHECKING OUT – _____

Submission of this form by the party(s) listed below signifies the following statement:

* I agree to hold the organizers of this event and their agents harmless from all suits, claims, or demands of every kind and character arising out of and in conjunction with this event. I hereby authorize the reproductions, sale, copyright, exhibition, broadcast, and/or distribution of any event pictures/videotape without limitations. I understand the physical risks of entering dance competition and social dancing and assume full responsibility for any injury or personal damages resulting from the event names above. I certify that I am 18 years of age or older (applicable to Legal Guardian if under 18 years of age). *

Signature _____ Date _____ Signature _____ Date _____

Pre-Ordered Event Shirt Sm – Lg **\$15.00**, XL – 3XL **\$17.00** Size(s) Name 1 _____ - Name 2 _____ **NEW DESIGN!**

Reservation Deposit Amount \$ _____ (Must be at least \$75.00 to hold your space)

Pre-Ordered T-shirts Total \$ _____ (Include with 1st deposit please)

Insurance \$ _____ (Include with 1st deposit please)

Annual Putt Putt Tournament \$ _____ 8.00 (Please sign up ahead. This year we will let everyone draw a number from a bag instead of picking people at random. We don't want anyone to be the last person picked, or show favoritism. We need to know how many teams in advance.a

Total deposit sent \$ _____ Check Number _____ **Sorry no credit cards!**

PLEASE COPY THIS PAGE AFTER YOU COMPLETE IT FOR YOUR RECORDS BEFORE MAILING IT IN.

Make checks payable and mail to Steve Lescarbeau – 64 East Road – Clarksburg, MA 01247-2164